



# Lady Lumley's School Newsletter

3rd February 2017 Issue Number 364



Dear Parents, Carers and Friends

Year 9 students have been having examinations this week and I would like to take this opportunity to thank the year group for the excellent way they have behaved on entering and leaving the examination rooms and during the examinations themselves. I would also like to thank our team of invigilators who manage the examinations and look after the students in the hall and in a large number of rooms throughout the school. Internal and external examinations can be a stressful business for the students and the fact they run so smoothly at Lady Lumley's is testament to the dedication of the invigilators and the incredible organisational skills of Mrs Turner and Mrs Mawson in the examinations office.

On Monday and Wednesday this week we held two sets of interviews for new staff to the school. On Monday we appointed an additional member of the advanced teaching support team and I am really pleased to welcome Jess Hebron to the staff team. Jess is an ex-student of the school and has returned to Lady Lumley's after a very successful three years at the University of Leeds. Candidates followed the usual pattern of the day which included meeting **Milly Fitton, Keldon Swartz and Amy Ring** as the student panel and being given a tour of the school by **Josh Hodgson and Jamie Winship**. On Wednesday we interviewed six candidates drawn from 30 applicants for the post of art teacher. The candidates were each asked to teach a short lesson to a Year 7 class. The students in 7APY and 7STA were absolutely impeccable in the way they behaved in the lessons, being polite, inquisitive and contributing so positively. Mr McGrath and I, who observed the lessons, were impressed by the students (and by the candidates as well!). Again there was a student panel of **Joseph Bentley, Laila Georgiou, Jess Holloway and Alex Vasey** and the tour guides, **Joe Dawson, Max Newby, Amy Stacey and Joss Webster** were amazing at showing the candidate around the school and giving a real insight into life at Lady Lumley's. As with all interviews, we involve a member of the governing body on the selection panel and I would like to thank Nigel Allen for working with us on Monday and John Cheetham for his support with the art interviews on Wednesday.

Lastly, but definitely not leastly\*, we began the Year 11 interviews this week. Each Year 11 student has a 10 minute interview with a member of the senior leadership team where we offer impartial advice and guidance about life post-16. We are armed with information about the students and we are ready with websites on universities, employment pathways and apprenticeships. Sometimes the students have definite plans and we test these against their aspirations, interests and achievements. Sometime they need further advice and then we arrange an additional careers interview with our dedicated careers adviser, Mrs Lowe. We try as hard as possible to make our advice impartial, for instance even if a student has made the decision to remain at Lady Lumley's School to study for A levels, we recommend they look at other providers to make sure that this is as informed a decision as possible. We would also facilitate visits to other providers as this time is a crucial one and the students have to make the choices which are best for them. It also rewarding when the students have taken our advice, looked elsewhere, and would still prefer to come here, where they know they will get a good education and unlimited support. Richard Bramley  
(\* I do not think *leastly* is a real word either, but it sounded so much better in the sentence than *least*)

## The Witches Year 7 Theatre Trip

We took 48 Year 7 students to Leeds to see the WYP's festive production. The play was great! The company used music, puppets and some fantastic costumes to tell the story of a young boy who finds himself at the annual Witches conference.

On the bus back I asked some of the students what they thought: 'I thought it was really good and I thought the witches were quite scary at some point. Boy and Bruno were funny when they were the mice and they were all really good actors and musicians'.

'The play was really good and funny. The audience really enjoyed it and I really liked the mouse circus. When the head Witch disappeared I couldn't work out how they did it, it was like magic!. 'My best bit was when the boys changed into mice it was also really good sitting on the front row.'

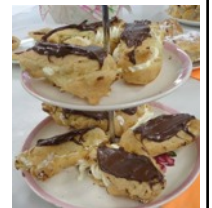


## House Bake Off Round 2B Results

This week saw part 2 of the pastries round of Bake Off with students making and baking 6 identical sweet or savoury pastries. The students displayed a variety of skills whilst completing their bakes within the time allowance. Mrs Willet, Mr Rutherford and the Senior Student Team judged the bakes and were extremely impressed by the quality presented this year! The students conducted themselves calmly and with purpose once the baking started and rallied together to clean up and taste each others baking. This week's star baker was given to **Hollie Gill** who made delicious chocolate éclairs from scratch with utter precision.

Well done to all our bakers who will now go into the final show stopper on Tuesday 7th February alongside the staff teams. The brief is to create a 'biscuit creation' that fits a theme of their choice. Biscuits must be baked in the time given and appropriately decorated to their theme.

Points from all three rounds will be added together to find our overall 'Top Baker'. Good luck to all students! Remember you will need to be in FT2 for 12:20pm on Tuesday - ensure you arrive promptly!!



### Parents' Forum - Tuesday 7th February 2017

Our next Parents' Forum meeting will be on Tuesday 7th February 6.30-7.30 p.m. in our Sixth Form Common Room. The evening will be led by Anna Button, Community Safety Officer, who will be talking about the use of legal highs amongst young people and the associated risks. Anna will deliver a similar session to our students at a later date. If you would like any further information please contact Brian Davis via the school reception or by email: [bdavis@ladylumleys.net](mailto:bdavis@ladylumleys.net).

### Apprenticeship Survey

We have been asked if our Year 11 and 13 students and their parents would take part in completing a survey based around the attraction of apprenticeships. The survey has been designed by an undergraduate from university for North Yorkshire County Council.

I hope you will take part as this may help develop the support and information we receive in future for apprenticeships. Many thanks, Mrs Briston & Mrs Allan  
Student Survey - [www.surveymonkey.co.uk/r/7ST5QV2](http://www.surveymonkey.co.uk/r/7ST5QV2)  
Parent Survey - [www.surveymonkey.co.uk/r/7SYH2SY](http://www.surveymonkey.co.uk/r/7SYH2SY)

### Safer Internet Day - Tuesday 7th February 2017

It is very important that parents/carers talk to their children about how to stay safe online and to monitor their children's online activity. NYCC have produced a list of websites to access advice and tools that parents/carers can use to help keep their child safe online. *Please see school website - Parents tab - Letters to Parents section - 'Safer Internet Day 7 February 2017'.*

**Word of the Week** - The words of the week this week are by way of an apology and a correction. Last week many of you would have spotted (and some of you pointed it out to me, thank you) that I erroneously used the word *suffix* when I should have used the word *prefix*. To clarify things, and as a lesson to myself, I will clarify the two words. A *prefix* is a collection of letters (linguistic element) put in front of another word to make a new word. Its derivation is lovely and simple as *pre* means before and *fix* means fasten, so it means to fasten something at the beginning. Common prefixes are anti-, non-, pre-, re-, sub- and un-. e.g. *meeting an undead person like a zombie would be unlikely.* *Suffixes* are collections of letters (linguistic elements) put at the end of other words. The *su* bit comes from *sub* meaning under or below, and in this case, after. Suffixes are very common, e.g. hot to hotter (the suffix is -ter), manage to management (the suffix is -ment), will to willing and joy to joyful.

### Lady Lumley's School Equestrian

The school equestrian club will be having a ride training session at Friars Hill Stables on **Tuesday 14th February** to start at 5.30pm. The cost will be £15.00 and those who are interested in joining this session should telephone 01751 432758 to book in and pay. Payment will be taken at the point of booking. The club are looking to sort out some teams for the qualifying competition which will held at Northallerton on Saturday 25th February. Entries for the qualifier close on 20th February so it would be a good idea for those interested to come along to the training. If the team is successful then they would qualify for the County Championships final at Bury Farm on 21-23rd April. For further information please contact Friars Hill using the number above or see Mr Park in school.

### USEFUL CONTACT INFORMATION

Main School Office: 01751 472846  
Attendance Officer: 01751 472846  
Finance Office (ParentPay): 01751 470043  
Specialist School Nurse: 01609 798150/146

### School nurse drop-in

The school nurse, Fiona Darrell, will be in school on Thursday lunchtimes for drop-in. She will be in "the pink room" (down the lockers corridor beside GO1) from 12:30-1:30 for anybody wishing to chat with her about a health matter. Fiona will offer health support and advice. **Please note that any student under 14 years of age will need permission from a parent/carer.** If any parent/carer would like to discuss this service please give school a call and ask for student support, Ms Rose, Mrs Loosley, Mrs Briston or Ms Smith.



### Sainsbury's Active Kids Vouchers 2017

Once again the Food Technology Department are collecting the Sainsbury's Active Kids Vouchers. The vouchers will be available between 25<sup>th</sup> January- 30<sup>th</sup> June 2017. If you, or any friends, relatives or neighbours, shop at Sainsbury's we would be very grateful if you would collect them and send them into school where there is a collection box at the main reception. Last year's support enabled us to acquire some much appreciated extra equipment to help the students in their food lessons. Many thanks. The FT Department

### Swainsea Lane Road Closure - Wednesday 8th February

You may have seen signs up to say that Swainsea Lane is closed on Wednesday 8<sup>th</sup> February. The length of road to be closed is beyond the built-up area, further north. It's BT works, trimming trees from overhead lines and safety testing the poles. Theoretically, the work is programmed for the 8th February, between 9.30 a.m. and 3.30 p.m., although this can be affected by unforeseen circumstances. For further information contact A-Plant Lux, who are organising the works on behalf of BT, Tel: 03700500792 or e-mail: [surveys@aplant.com](mailto:surveys@aplant.com).

### IMPORTANT DATES

#### Monday 6th February

10 Battlefields Experience (6th - 11th)  
Y12 TnT Event Management Trip, Newcastle  
U13 District Hockey Training, SC 4 p.m.  
Y13 Drama Assessment Performance 6.15 p.m.

#### Tuesday 7th February

Y12 TnT Event Management Trip, Leeds  
House Bake Off Final 12.20 p.m.  
**Parent Forum 6.30 p.m.**

#### Wednesday 8th February

U15 District Hockey Training, LLS 4 p.m.  
**Y8 Consultation Evening 4.30 p.m.**

#### Thursday 9th February

Y7 Basketball, Scalby  
Y6 Roadshow, Thornton Le Dale 7 p.m.

#### Upcoming Events...

Monday 13th February - Y7 Production/workshops  
Tuesday 14th February - Y10 Mock Interviews (a.m.)  
Wednesday 15th February - Y7 Wentworth Woodhouse Trip  
Friday 17th February - School Closes for Half Term  
Monday 27th February - Student Return to School  
Tuesday 28th February - KS3-5 Rotary Club Challenge, York  
Tuesday 28th February - Youth Speaks  
Wednesday 1st March - Y9 Drama Theatre Trip, Leeds  
Thursday 2nd March - Y7 Consultation Evening 4.30 p.m.